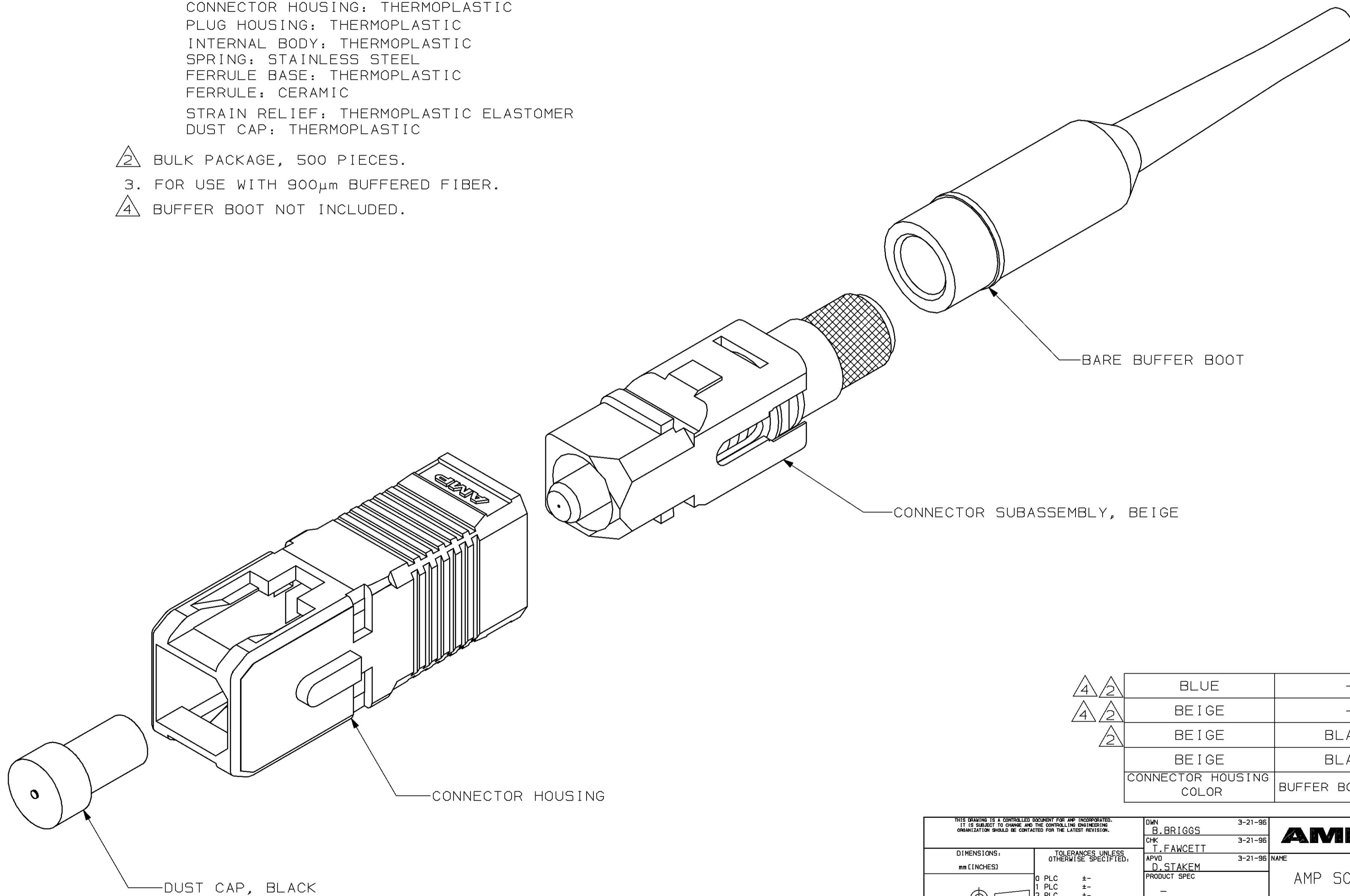


THIS DRAWING IS UNPUBLISHED. RELEASED FOR PUBLICATION
 BY AMP INCORPORATED. ALL RIGHTS RESERVED.

LOC	DIST	REVISIONS			
P	LTR	DESCRIPTION	DATE	DWN	APVD
CE	16	B	REVISE PER 0A00-0506-99	11MAY99	JPM SB

- 1 MATERIAL:
 CONNECTOR HOUSING: THERMOPLASTIC
 PLUG HOUSING: THERMOPLASTIC
 INTERNAL BODY: THERMOPLASTIC
 SPRING: STAINLESS STEEL
 FERRULE BASE: THERMOPLASTIC
 FERRULE: CERAMIC
 STRAIN RELIEF: THERMOPLASTIC ELASTOMER
 DUST CAP: THERMOPLASTIC

- 2 BULK PACKAGE, 500 PIECES.
 3. FOR USE WITH 900µm BUFFERED FIBER.
 4 BUFFER BOOT NOT INCLUDED.



4 2	BLUE	-	504932-4
4 2	BEIGE	-	504932-3
2	BEIGE	BLACK	504932-2
	BEIGE	BLACK	504932-1
	CONNECTOR HOUSING COLOR	BUFFER BOOT COLOR	PART NUMBER

THIS DRAWING IS A CONTROLLED DOCUMENT FOR AMP INCORPORATED. IT IS SUBJECT TO CHANGE AND THE CONTROLLING ENGINEERING ORGANIZATION SHOULD BE CONTACTED FOR THE LATEST REVISION.

DIMENSIONS: mm (INCHES)	TOLERANCES UNLESS OTHERWISE SPECIFIED: 0 PLC ± 1 PLC ± 2 PLC ± 3 PLC ± 4 PLC ± ANGLES ± FINISH -	DWN B.BRIGGS 3-21-96 CHK T.FAWCETT 3-21-96 APVD D.STAKEM 3-21-96	AMP Incorporated Harrisburg, PA 17105-3608
MATERIAL 1		NAME AMP SC, MULTIMODE CONNECTOR KIT, 900µm	SIZE A2 CAGE CODE 00779 DRAWING NO. C-504932
		PRODUCT SPEC - APPLICATION SPEC - WEIGHT -	SCALE NTS SHEET 1 OF 1 REV B
		CUSTOMER DRAWING	

504932